

Interior Tower Drawers - assembly instructions

Drawer unit 'top 'cover' installation

- Attach a fixed shelf at the top of where you want your drawer unit(s) to be. This will form the top of your drawer installation.

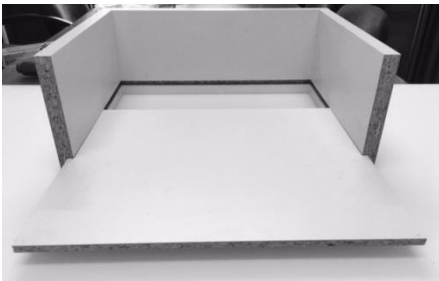


Drawer box assembly

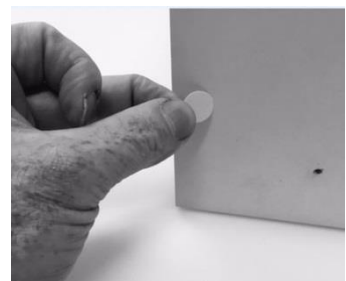
- Attach back / front / side using screws provided.



- Slide drawer base into recess and attach other side.



- Attach colour co-ordinated screw cap covers.

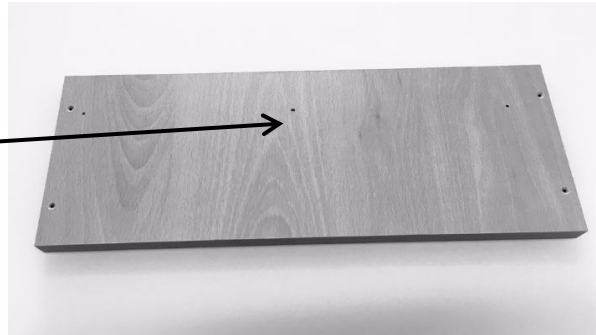


Drawer runner installation.

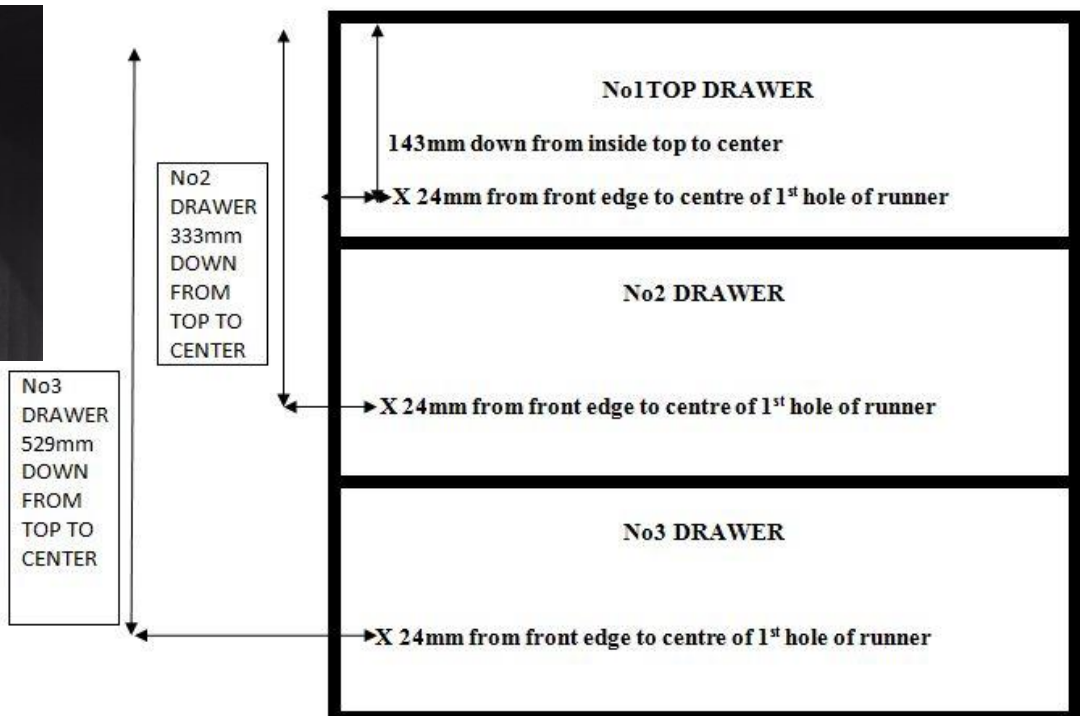
- Disassemble runner by disengaging black 'locking' arm.



- Screw fixed base plate (i.e. the one with the black 'locking' arm) to drawer side using pre-drilled holes in drawer side.



- On the tower side panel and depending on which drawer you are installing, measure down from the bottom of a fixed shelf (now forming the top of your drawer unit) by the distance on shown below and mark the panel. Repeat on opposite side.



- Strike a horizontal line from that mark to the back of your unit. Repeat on opposite side.
- Take the side runner carriage, place 18mm back from the front edge of your unit with holes over the strike line i.e. centre of holes in line with strike line).
- Mark centres of fixing holes and drill pilot holes in side panel. Caution – take care not to go all the way through. Screw runner into place. Repeat for opposite side

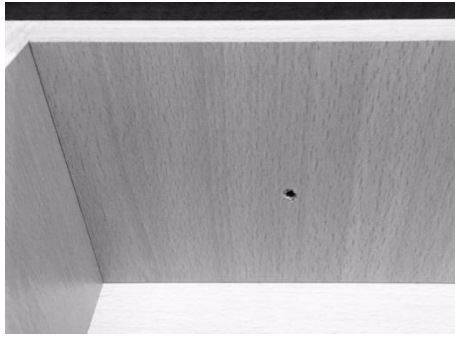


- Place the drawer unit into position by carefully inserting the fixed base on the drawer sides into the carriage section on the side panels.
Note: completely insert the drawer until you can hear the 'locking arm' engage.

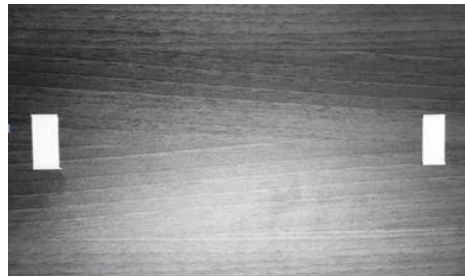


Drawer fascia installation

- Drill two 4-5mm holes in the drawer box front.



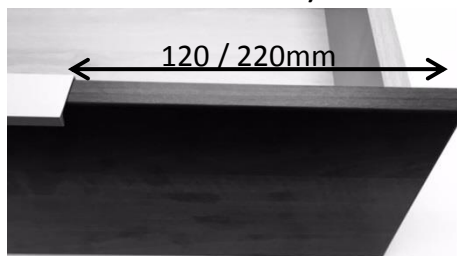
- Place two sticky pads (supplied) to the back of the drawer fascia and place onto the front of the drawer box, aligning as well as you can.



- Take screws and washers (supplied) and screw lightly through large holes in drawer box front into back of fascia.



- You will have some slight movement available now to align the fascia correctly. Once done, tighten the two screws.
- Attach handle over top of fascia ensuring central location (120mm from end on 400mm unit, 220mm on 600mm). Screw into position.



- Your unit is now complete.